



## GPG Series



*Combine the proven benefits of PML flat armature motor technology with a fully integrated ultra-slim gearbox.*

A compact, lightweight and durable motor gearbox combination, the GPG series provides a high quality, low cost solution to suit a vast array of applications.

To provide maximum selection flexibility, 6 alternative gear ratios are offered as standard for each of 3 motor-gearbox models to suit 12, 24 or 36V rated voltages. An optional encoder or brake can also be externally fitted to the rear of the motor to provide a feedback control loop or simple safety feature.

PML flat armature, ironless disc motors as used in applications worldwide, are renowned for their low inductance, zero spark, exceptional brush life. These qualities also ensure excellent EMC properties.

### GEARBOX SPECIFICATION

*Grease lubricated*

*Gearbox output - Load @ stall 296kg*

*Bearing output shaft 6003 -*

*Load @ rated speed 610kg*

*Max temperature - 150°C*

*Weight - 1.5kg typical*

*Colour - Black*

### STANDARD BENEFITS

- DC inputs; 12 to 36V
- Gear ratio selections  
*5 standard options from 12:1 to 206:1*
- Compact design
- Lightweight and durable
- Low cost solutions

### SPECIAL OPTIONS

Special options include Brake Encoder or Tacho that can be fitted to rear of motor, contact PML for information.

Gearbox can be supplied with shaft at top of unit - up to 30:1 ratio only.

Any gear ratio available from 10:1 to 206:1 contact PML for more information.

### TYPICAL APPLICATIONS

- Battery operated units
- Welder conductor feeds
- Industrial robots
- Small rewinders
- Wire drawers
- Medical equipment
- Golf carts
- Mobility equipment - wheel drive

For further information ►



# GPG Series

## PERFORMANCE DATA

GPG - M12 (12V) Rated voltage and current 12 Volts and 10 Amps						
REDUCTION RATIO		10	25	80	120	206
Output Shaft Torque	Ncm	2	4	13	20	35
Output Shaft Speed	rpm	300	120	38	25	15
Instantaneous Max Torque	Nm	3	6	19	30	52
Efficiency		86	86	85	85	85

GPG - N12 (36V) Rated voltage and current 36 Volts and 7 Amps						
REDUCTION RATIO		10	25	80	206	
Output Shaft Torque	Ncm	6	13	42		special order only
Output Shaft Speed	rpm	300	120	38		
Instantaneous Max Torque	Nm	9	20	63		
Efficiency		86	86	85		

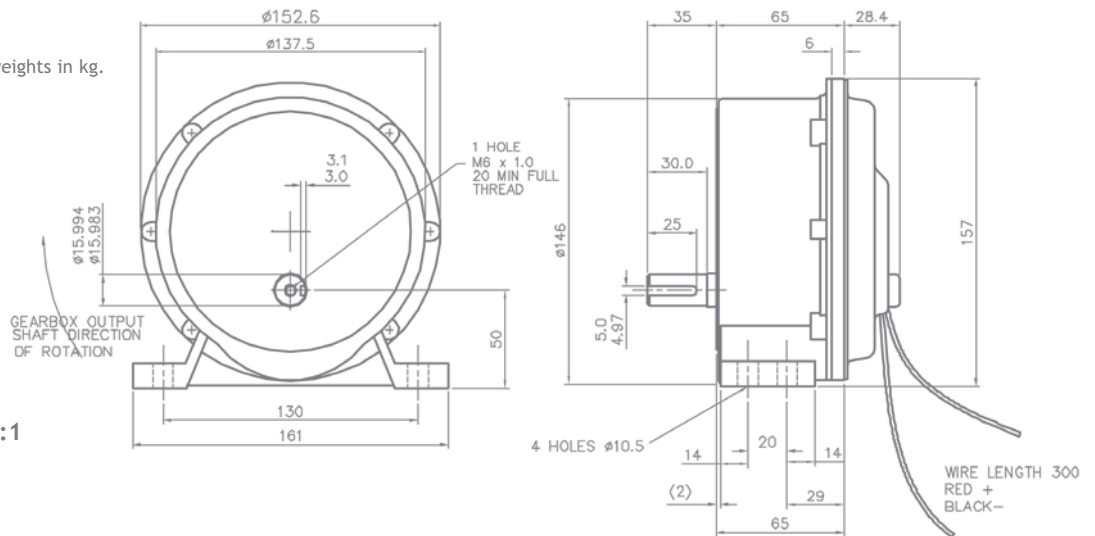
GPG - M12 (24V) Rated voltage and current 24 Volts and 7.5 Amps						
REDUCTION RATIO		10	25	80	120	206
Output Shaft Torque	Ncm	3	7	23	35	61
Output Shaft Speed	rpm	300	120	38	25	15
Instantaneous Max Torque	Nm	5	11	34	53	91
Efficiency		86	86	85	85	85

## PERFORMANCE CHARACTERISTICS AND DATA

## DIMENSION GUIDES

All dimensions in mm. All weights in kg.

RATIOS >25:1 to 206:1



RATIOS 10:1 to 25:1

